

# Public Information Center

October 27, 2021

## Rumson-Sea Bright Bridge Replacement



*Rumson Road (CR 520) over the Shrewsbury River  
Borough of Rumson and Borough of Sea Bright, New Jersey  
Construction Phase*



# CONSTRUCTION PHASE

## *STATUS & SCHEDULE*



PHASE	DATES	STATUS
Local Concept Development (LCD)	2011 - 2013	✓
Local Preliminary Engineering (LPE)	2014 – 2017	✓
Final Design (FD)	2018 – 2020	✓
Construction	2021 - 2025	

**We are Here** →



# CONSTRUCTION PHASE

## *PROJECT TEAM MEMBERS*

---

### **Monmouth County**

- Joseph M. Ettore, PE - County Engineer
- Andres Roda, PE - County Project Manager
- Fred Passeggio, PE - Chief Bridge Engineer
- Inkyung Englehart, PE - County Project Coordinator

### **New Jersey Department of Transportation (NJDOT)**

- Arnab Biswas - NJDOT Local Aid Project Manager
- Kumudika Somaratha - NJDOT Local Aid Supervising Engineer

### **R. E. Pierson Construction (Contractor)**

- Don Wagoner - Pierson General Manager
- Jaimin Patel - Pierson Senior Project Manager

### **WSP Team (Inspection)**

- Ray Moran, PE - WSP Project Manager
- Felix Fuster - Amercom Resident Engineer
- Andrew Nagy - Amercom Office Engineer
- David Nyarko, PE - WSP Movable Bridge Engineer

### **Hardesty & Hanover (H&H) Team**

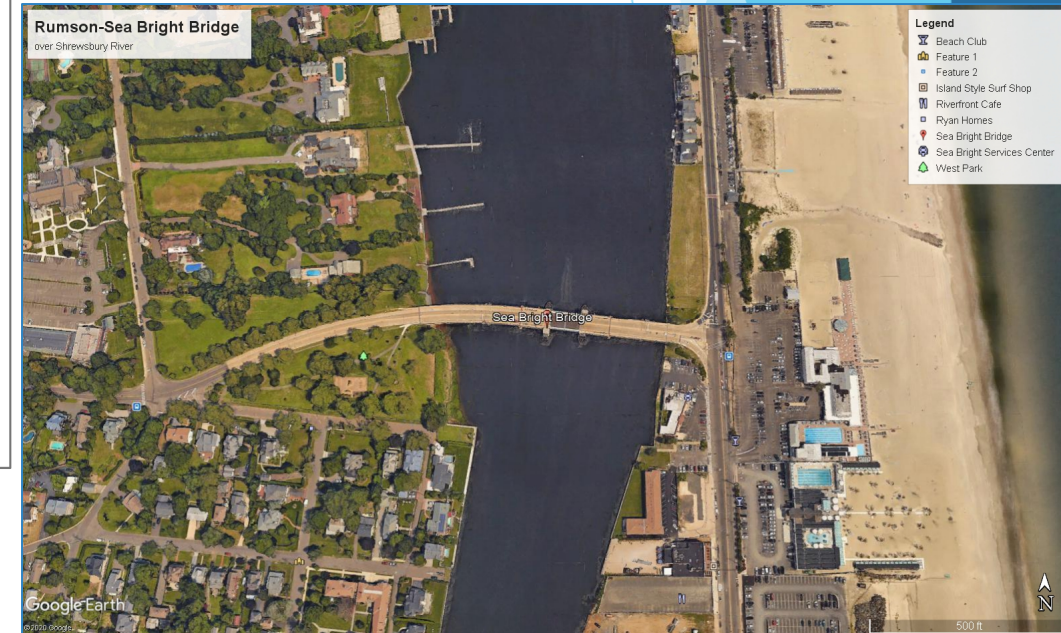
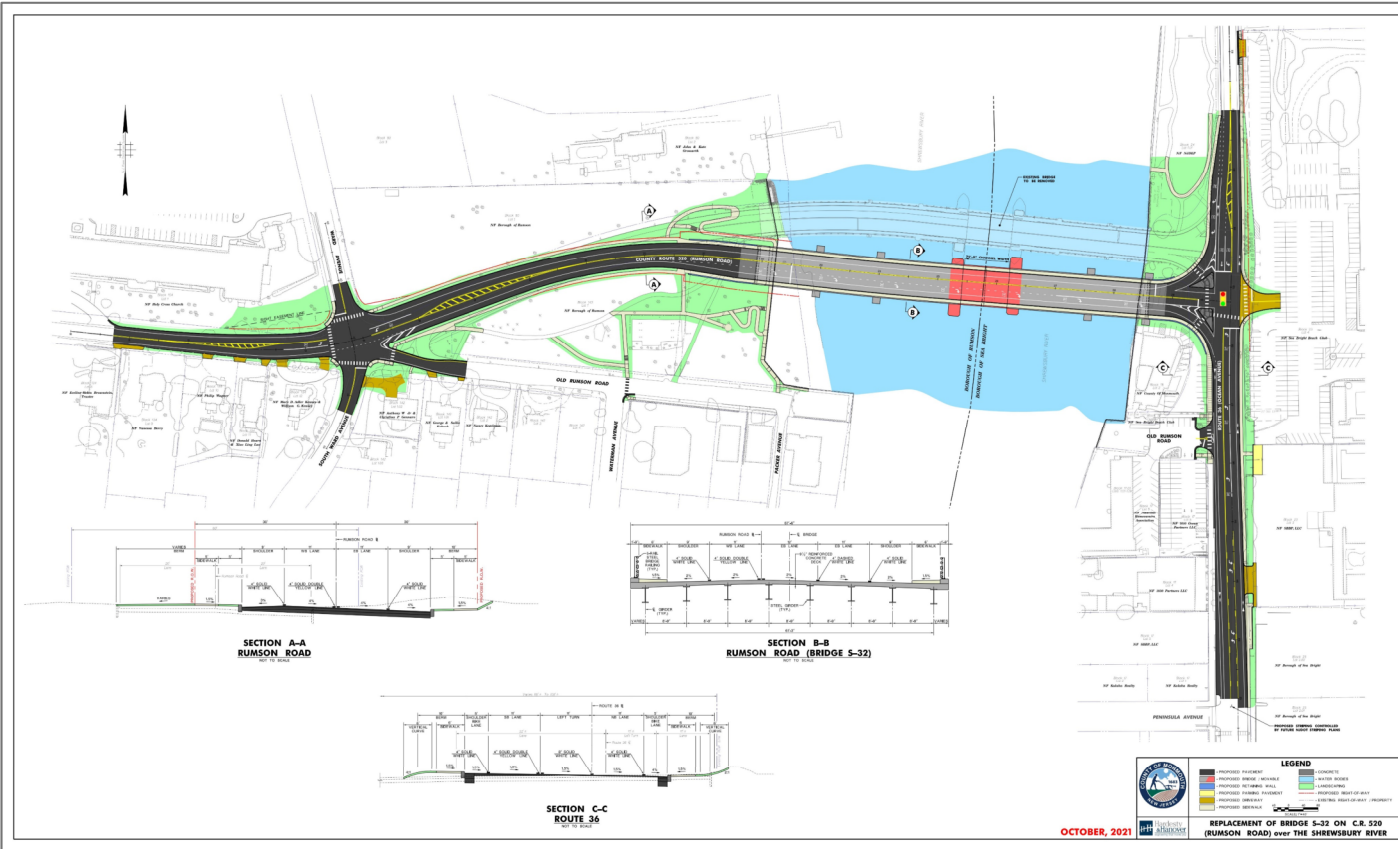
- Bruce Riegel, PE - H&H Project Manager
- Glen Schetelich, PE - H&H Principal in Charge
- David Gerber, PE - H&H Project Engineer
- Brian Medino, PE - H&H Project Engineer





# RUMSON-SEA BRIGHT BRIDGE REPLACEMENT

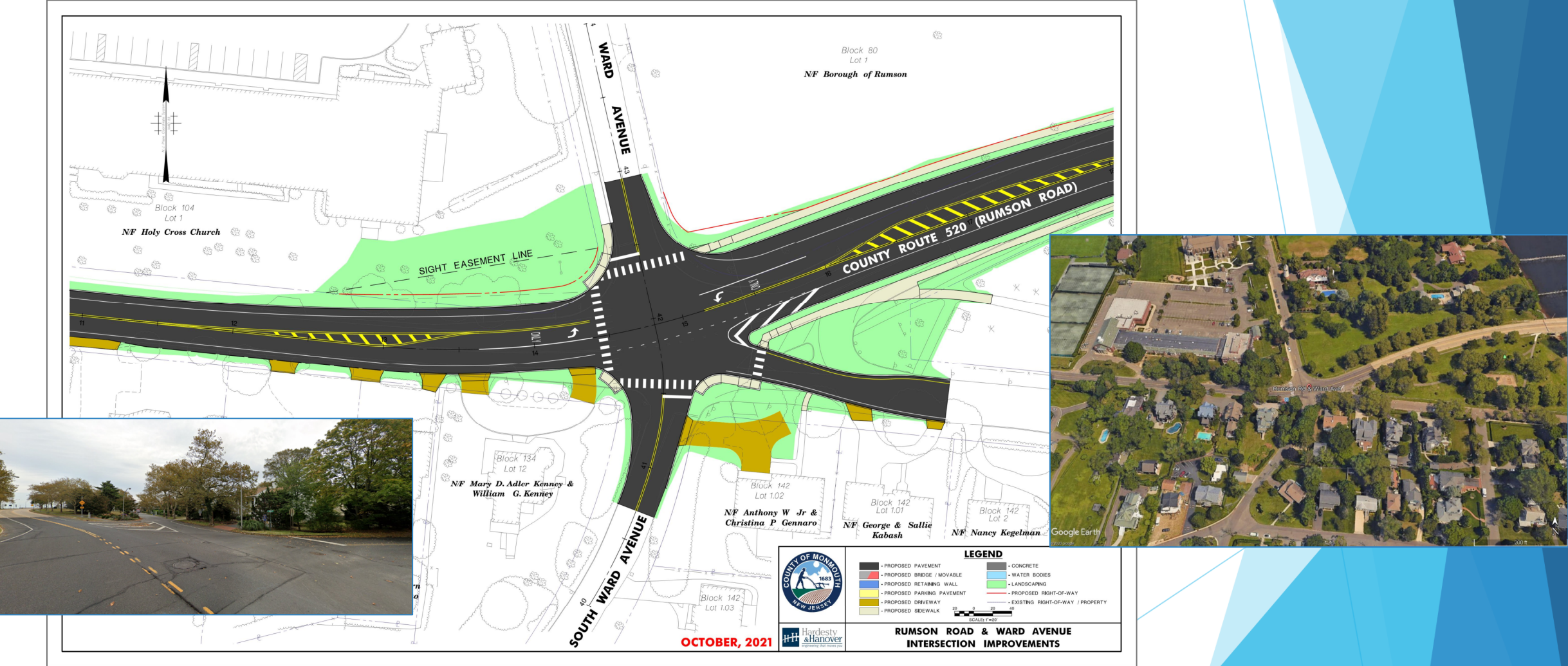
## OVERALL PLAN





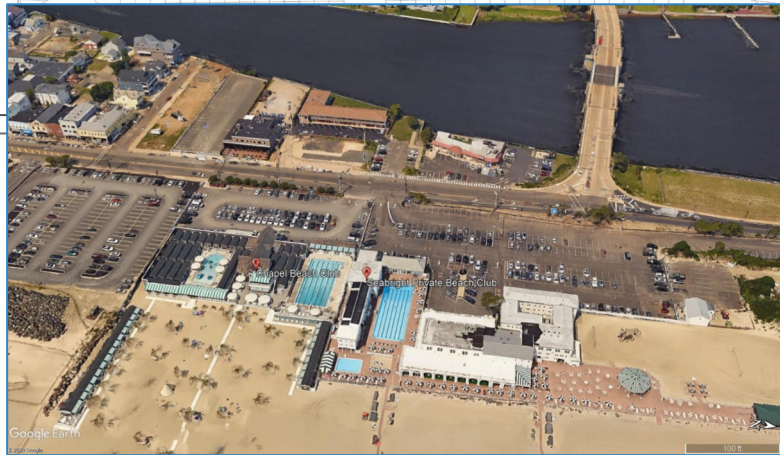
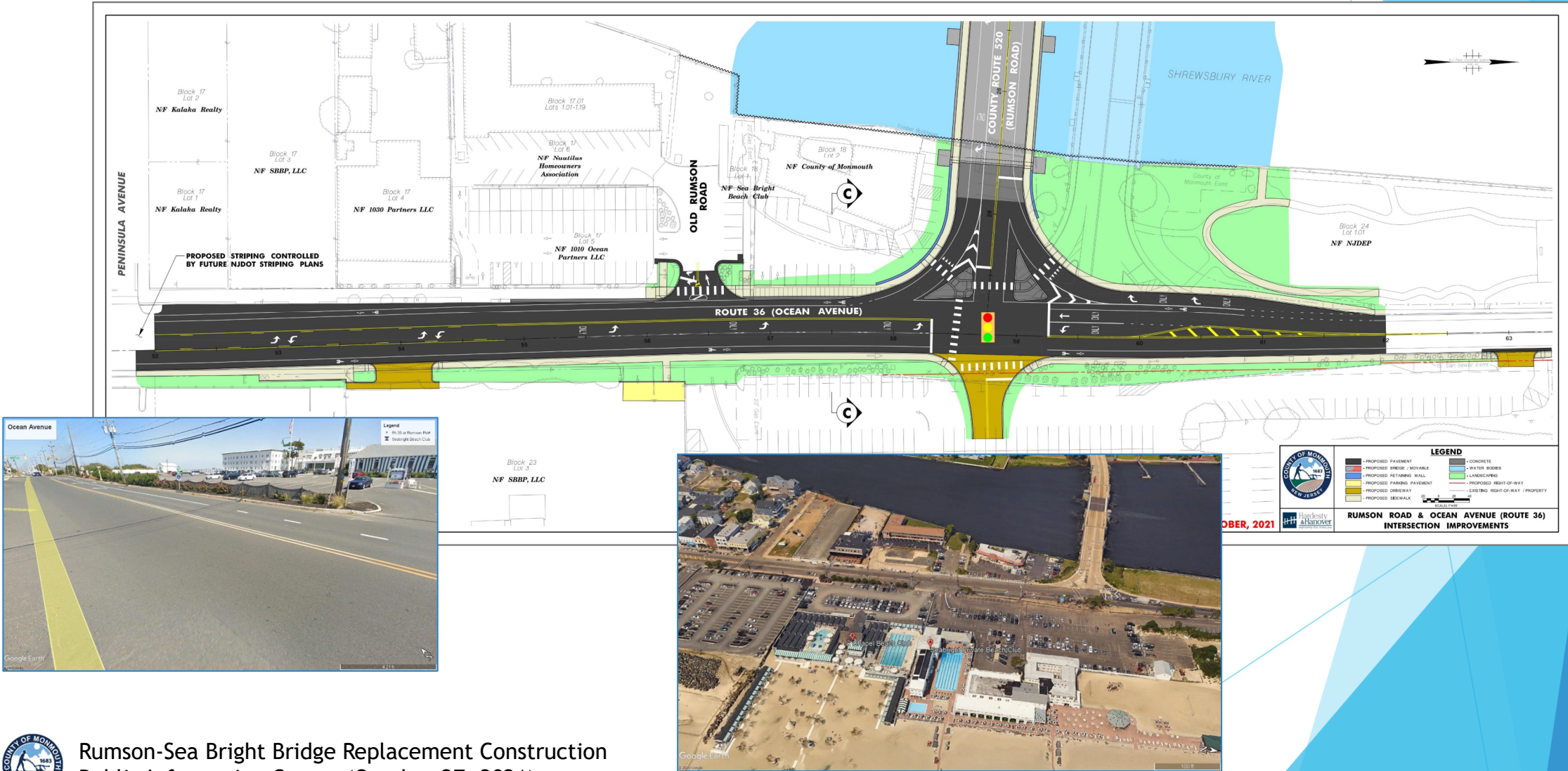
# RUMSON ROAD & WARD AVENUE INTERSECTION

## RUMSON IMPROVEMENTS



# RUMSON ROAD & OCEAN AVENUE (ROUTE 36) INTERSECTION

## SEA BRIGHT IMPROVEMENTS





# RUMSON-SEA BRIGHT BRIDGE REPLACEMENT

## *ENVIRONMENTAL PERMITS AND APPROVALS*

- ▶ NJDEP Historic Preservation Office: Memorandum of Agreement
- ▶ NJDEP Green Acres: Approval
- ▶ FHWA: NEPA - CED/Section 4(f)
- ▶ NJDEP: Freshwater Wetlands General Permits 10, 11, 17A; Coastal General Permits 13, 14, 24; CAFRA & Waterfront Development Individual Permit; Tidelands Grant & License
- ▶ NOAA: Approval
- ▶ US Coast Guard: Bridge Permit
- ▶ US Army Corps of Engineers: Nationwide 23 & 27 Permits
- ▶ Freehold Soil Conservation District: Soil Erosion & Sediment Control Plan Certification

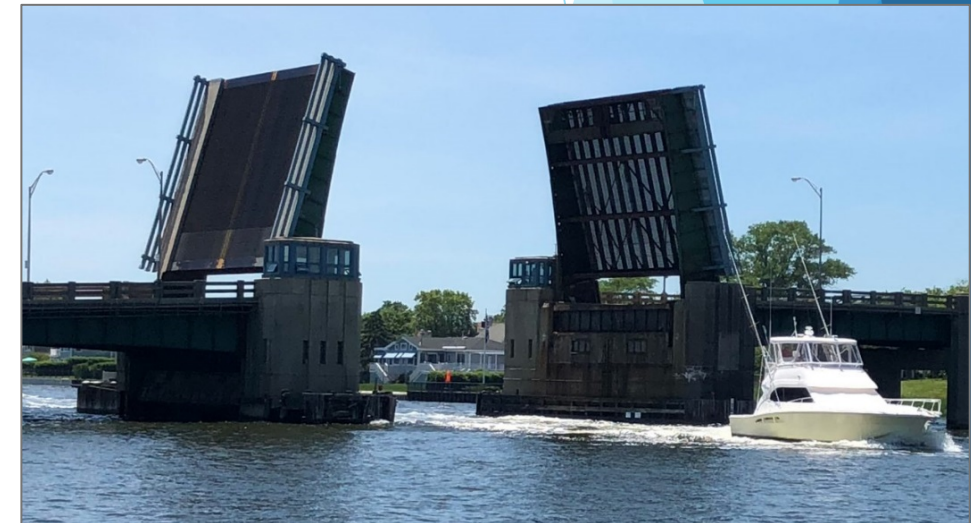




# RUMSON-SEA BRIGHT BRIDGE REPLACEMENT

## *IMPROVEMENTS*

- ▶ **Greater Capacity and Safety on Bridge**
  - ▶ Two lanes towards Sea Bright and one lane towards Rumson
  - ▶ Roadway shoulders on each side of bridge: *bikes, maintenance*
- ▶ **Sidewalk & Bicycle Connectivity**
  - ▶ Sidewalks on both sides of bridge to both roadway intersections
  - ▶ Improves pedestrian mobility: *baby strollers, joggers, children on bikes*
- ▶ **Concrete Deck Surface Replaces Open Grate**
  - ▶ Reduces vehicular noise
  - ▶ Smoother ride and improved bicycle safety
- ▶ **Movable Span Operations**
  - ▶ Safe, Efficient, Reliable
  - ▶ Three backup systems: *motor, generator, natural gas-powered engine*
  - ▶ Energy-absorbing vertical barrier gates



# CONSTRUCTION STAGING & TRAFFIC MANAGEMENT

## *BUILDING THE BRIDGE IN RUMSON & SEA BRIGHT*

---

- ▶ Construction Activity by Barge and Trestle in River
- ▶ Construction Staging Areas
  - ▶ Protection fencing – wood stockade and chain link
  - ▶ North side of West Park, Rumson
  - ▶ South area of Riverfront Park, Sea Bright
- ▶ Compliance with Noise Ordinances
- ▶ West Park Playground, Rumson, Remains Open with Temporary, Wood Stockade Protection Fencing Along Roadside



# CONSTRUCTION STAGING & TRAFFIC MANAGEMENT

## *KEEPING EVERYONE MOVING SAFELY DURING CONSTRUCTION*

- ▶ Existing Bridge - *Open to Vehicles, Bicyclists & Pedestrians during Construction*
- ▶ Navigation Channel - *Open to Boats & Mariners during Construction*
- ▶ Existing Bike/Ped Accommodations – *Will be Maintained*
- ▶ Existing Residential & Business Driveway Access - *Will be Maintained*
- ▶ Temporary Detours - *Limited to Minimize Disruption*
- ▶ Existing Bridge – *Will be Removed After Opening New Bridge to All Traffic*

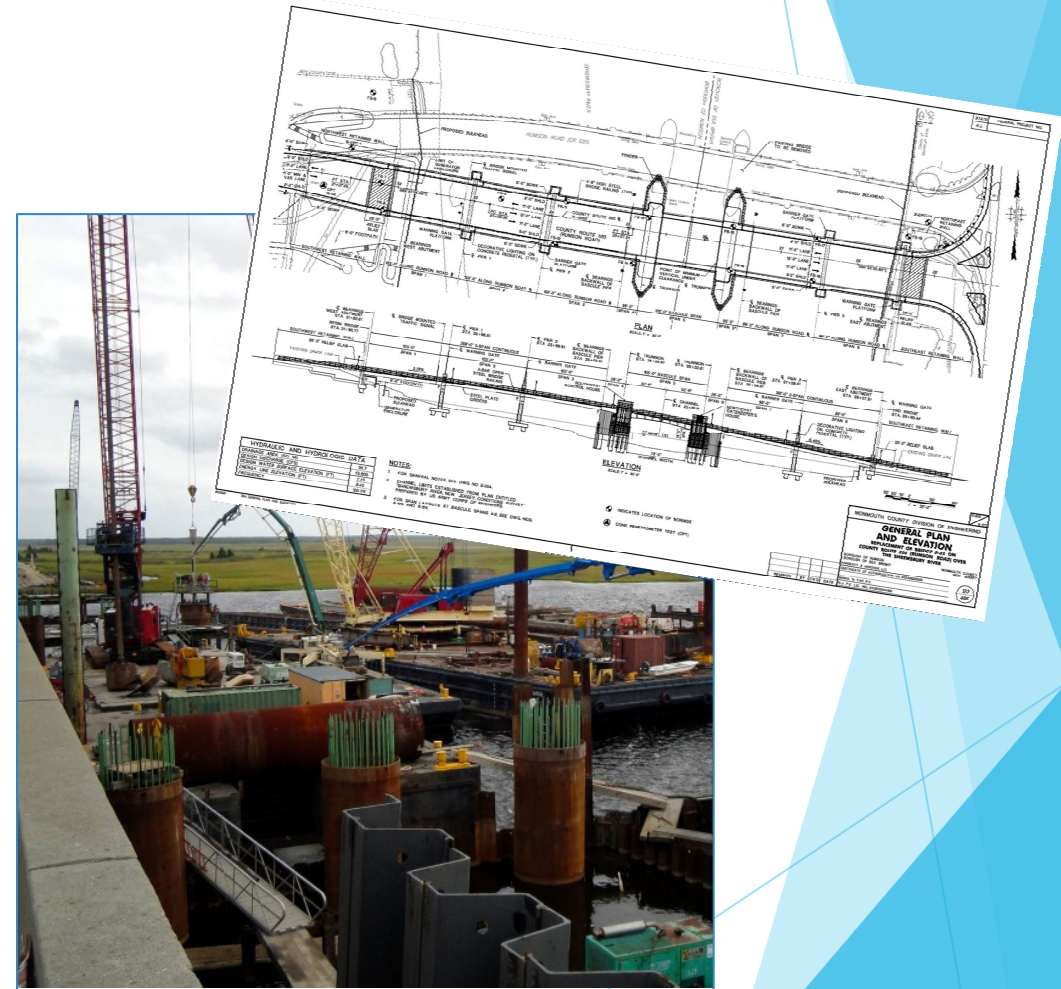




# CONSTRUCTION PHASE

## *ACTION ITEMS*

- ✓ Field Office Set Up
- ✓ Install Traffic Control Devices
- ✓ Install Soil Erosion Control Measures
- ✓ Temporary Fencing
- ✓ Vibration Monitoring
- ✓ Implement Tree Protection and Removal
- ✓ Pre-Construction Survey
- ✓ Demolish Dunkin Donuts Building
- ✓ Mobilize Crane/Construction Equipment



# CONSTRUCTION PHASE

## COMMUNITY INVOLVEMENT & PUBLIC OUTREACH

### ► Coordination & Information Exchange

- Local Officials
- Stakeholders
- General Public

### ► Website

- Recent News page
- Traffic Advisories
- Notices / Flyers
- Contact Us



# NEXT STEPS – *CONSTRUCTION*

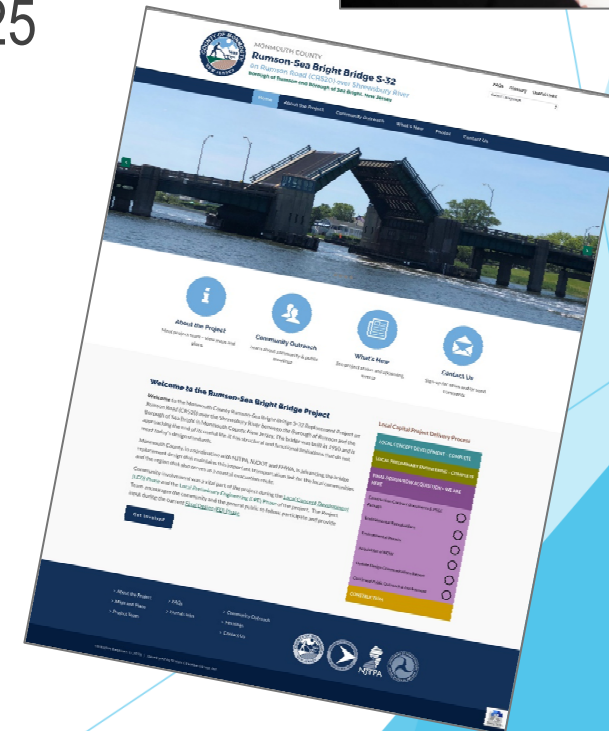
- ▶ Establish Field Office & 30 Day Schedule Fall 2021
- ▶ Develop Communication Strategy Fall 2021
- ▶ Respond to Questions and Comments On-Going
- ▶ Anticipated Construction Completion Spring 2025



## Stay In Touch

Project Website: [www.rumsonseabrightbridge.com](http://www.rumsonseabrightbridge.com)

Email: [info@rumsonseabrightbridge.com](mailto:info@rumsonseabrightbridge.com)





# Thank You!

*We look forward to continued collaboration for a successful Rumson–Sea Bright Bridge replacement.*



*The Project Team greatly appreciates your ongoing support.*

